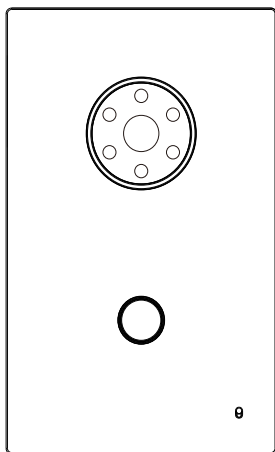
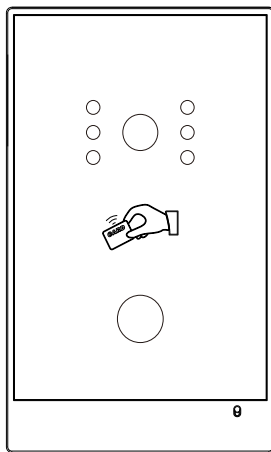


# Installation and Operation manual

## For TCP/IP With 902 System



902SD-C7



902SD-C5

**Outdoor Panel**



## ■ Remark

*Please follow the user manual for correct installation and testing. If there is any doubt please call our tech-supporting and customer center.*

*Our company applies ourselves to reformation and innovation of our products. No further notice for any change. The illustration shown here is only for reference. If there is any difference please take the actual product as the standard.*

*The product and batteries must be handled separately from household waste. When the product reaches the end of service life and needs to be discarded, please contact the local administrative department and put it in the designated collection points in order to avoid the damage to the environment and human health caused by any disposal. We encourage recycling and reusing the material resources.*

# CATALOG

<b>Product description</b> .....	<b>1</b>
<b>Product appearance</b> .....	<b>1</b>
<b>Basic function</b> .....	<b>2</b>
<b>Technical parameter</b> .....	<b>2</b>
<b>Product executive standard</b> .....	<b>3</b>
<b>Package contents</b> .....	<b>3</b>
<b>Basic operation</b> .....	<b>3</b>
<b>Face registration operation</b> .....	<b>4</b>
<b>WEB settings</b> .....	<b>7</b>
<b>System connection diagram</b> .....	<b>14</b>
<b>Wiring diagram of outdoor panel</b> .....	<b>15</b>
<b>Installation instructions</b> .....	<b>17</b>
<b>Troubleshooting</b> .....	<b>18</b>
<b>Safety &amp; Precautions</b> .....	<b>19</b>

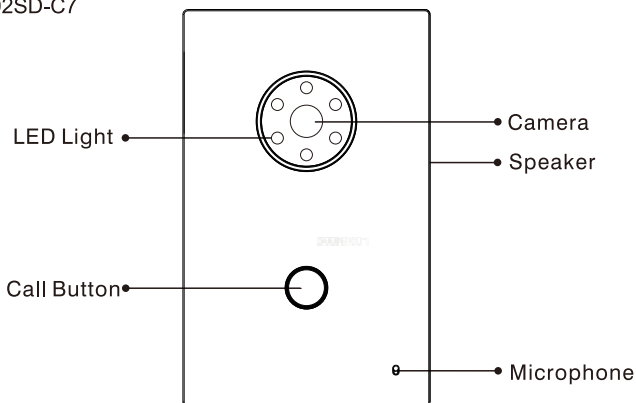
## Product description

### Application:

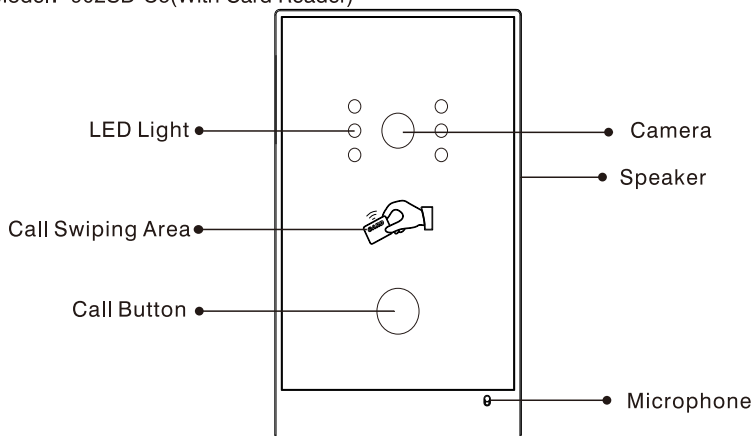
902 outdoor panel is a digital outdoor panel based on TCP/IP communication protocol, using SIP communication protocol. It is mainly used in building video intercom system, video monitoring, and access control system, etc.

## Product appearance

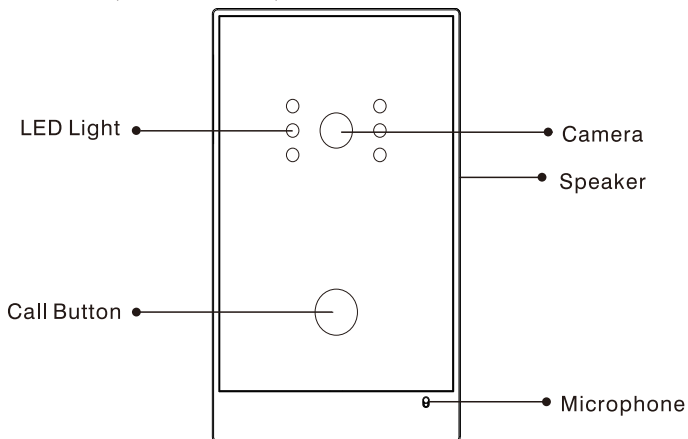
Model: 902SD-C7



Model: 902SD-C5(With Card Reader)



Model: 902SD-C5(No Card Reader)



## Basic function

- ◇Call indoor monitor by one button;
- ◇Support unlocking by Exit button;
- ◇Support LED light for night vision;
- ◇Support POE power supply (optional).
- ◇Support unlocking by IC access control card(for SD-C5 with card reader).

## Technical parameter

- ◇**Working voltage:** DC12V
- ◇**Rated power:** 10W
- ◇**Standby power:** 3W
- ◇**Camera resolution:** 1280x720
- ◇**Working temperature:** -40~+70℃
- ◇**Storage temperature:** -10~+60℃
- ◇**Storage relative humidity:** 20%~93%
- ◇**CPU frequency:** quad core 1.3GHz
- ◇**SDRAM:** 512MB
- ◇**Flash:** 4GB

## Product executive standard

- ◇ GA 1210-2014 "Security Technical Requirements for Building Intercom Systems".
- ◇ GB/T 31070.1-2014 "Building Intercom Systems—Part 1: General Technical Requirements".
- ◇ GB 9254-2008 "Information Technology Equipment - Radio Disturbance Characteristics - Limits and Methods of Measurement".
- ◇ GB/T 18239-2000 "Generic Specification for Integrated Circuit Card Reader(IC)."
- ◇ DB31 294-2010 "Requirements of Intelligent Security Technology in Residential District (2010 Version)".

## Package contents



Screw



Screw wrench

## Basic operation

### 1. Call indoor monitor

In standby mode, press the call button on outdoor panel to call indoor monitor. During the call, press the call button on outdoor panel again to end the call. If the call fails or indoor monitor is busy, outdoor panel will emit a beep.

### 2.Unlocking by card(for SD-C5 with card reader)

Put the registered IC card on card reader area of the outdoor panel. If IC card has been authorized, after unlocking the door by card, the system will issue a voice message that "the door has been opened", otherwise it will emit a beep.

### 3.Unlocking by Face Recognition

When someone's face is close to the front of the outdoor panel, outdoor panel will automatically start the face recognition. If the face has been registered, the door will be unlocked.

# Face registration operation

Download and install the management software on the management PC, and set the PC, management center, monitor and outdoor panel on the same network segment.

Add indoor monitor and outdoor panel to the management software, as shown in figure (1) and figure (2):

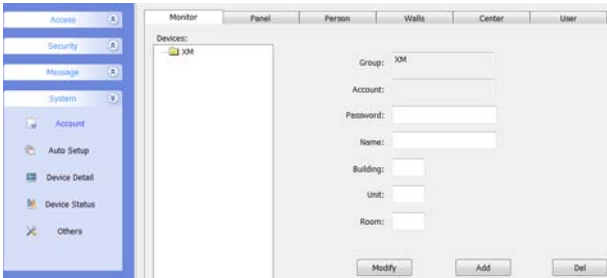


Figure (1)

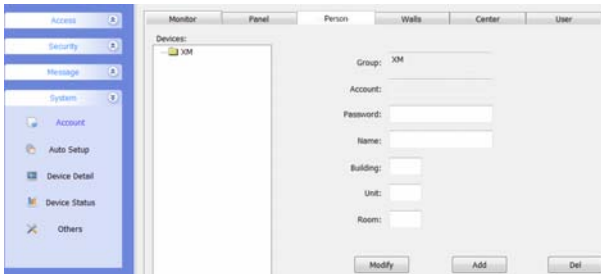


Figure (2)

Input the account information of outdoor panel and indoor monitor(password, building, unit and room numbers are required).

**Group:** name of the currently selected group which stores the added monitor account.

**Account:** no typing needed, system will automatically generate according to the building information.

**Password:** The password of connection to management software by the monitor and outdoor panel. The default password of the system is "123456".

**Building & Unit & Room No.:** based on the actual condition, input the correct building, unit and room numbers, which will generate the account information; the account information cannot be modified after generated, please make sure your building, unit and room numbers are correct.

Click "Add" icon after inputting all the information needed to add a new account.

#### **Face information registration:**

Upload data: find the added indoor monitor in the face management directory, as shown in figure (3), add clear and recognizable photos and fill in the information.

Data download: similarly, find outdoor panel in the face management directory, as shown in figure (4). Click "Face Download" to distribute the face data to the outdoor panel.

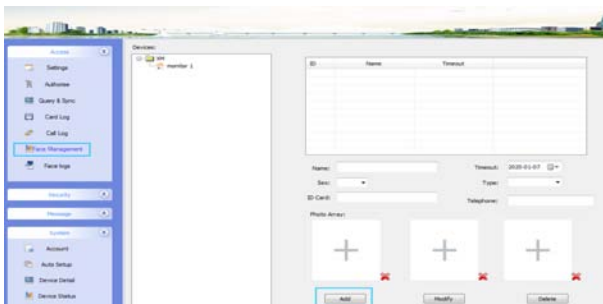
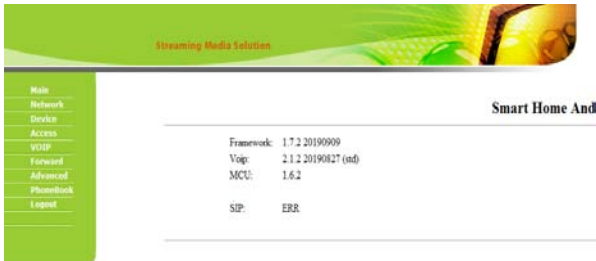


Figure (3)



# WEB settings

Connect outdoor panel to PC through the switch. Input IP address of outdoor panel in the web browser of PC (The IP addresses of PC and outdoor panel must be on the same network segment. Default IP address is 192.168.68.90), then input user name and password (default user name is "admin" and the password is "123456") to enter into the following interface:



## 1.Network Settings

Click the icon "Network" on the left side to enter the interface as shown below:



**DHCP:** dynamic IP function.

**IP address:** for the same system on the same network segment, IP address cannot be repeated.

**Subnet mask:** the original subnet mask is 255.255.255.0, which normally doesn't need to be changed.

**Default gateway:** according to the project site IP network allocation

**DNS:** refers to IP address of the DNS server

**Server IP:** IP address of digital management software installed in the management computer

**Access password:** IP access password for management software.

(Note: users can add outdoor panel on the management software, and then send face data and IC card registration data to the outdoor panel through the management software (the outdoor panel is on the same network as the computer with management software)).

Normally, management center, indoor monitor and outdoor panel are on the same LAN for communication; if they are not on the same LAN, the call can be realized on the internet; in this case, SIP server needs to be set.

After the setup is completed, click the icon "Submit" to enable the settings.

## 2.Device Settings



Building No., Unit No., Floor and Room No. are the ones where outdoor panel is located.

The No. can be set from 1 to 9. Device No. is mainly used for distinguishing the outdoor panel when it is watched by indoor monitor.

Password refers to the one used in your login to the webpage for outdoor panel settings (default password is 123456).

Outdoor Panel Mode: unit panel, wall panel or outdoor panel .

Language selection: only support simplified Chinese and English.

System volume: adjust the system volume with 6 levels for selection.

Video size: 320x240, 640x480 or 1280x720.

Call forwarding: the call can be made one by one or simultaneously.

Call mode: the call mode can be set to normal or repeat.

After the setup is completed, click the icon "Submit" to enable the settings.

### 3.Access Settings

Click the icon "Access" on the left side to enter the interface as shown below:



Unlock Timeout is used for controlling the unlocking time ranging from 1 to 9s.

Unlock Delay refers to the delayed time of opening the door ranging from 0 to 9s.

Elev refer is used for setting the floor of outdoor panel ranging from 01~99. (It is effective when outdoor panel is set as unit panel).

### Card registration

The Admin Card is used for registering user card. There are two ways of registering the admin card:

1. The user enters card No. of the admin card in the box after "Admin Card" and then click the key "Submit". In this case, the admin card is registered successfully.

2. If the user isn't aware of admin card No., please enter 0 in the box first and click the key "Submit". Then place the admin card close to the swiping area. When the system gives an indication tone, it means that the admin card is registered successfully.

Then register the user card. The user shall swipe the admin card first. The system will emit a beep. Then place the card to be registered near the swiping area within 10 seconds. When the system gives an indication tone, it means that the user card is registered successfully. When registering new user card, the card to be registered shall be swiped 10 seconds after the admin card is swiped. Once a user card is registered, the registration time will postpone for 10 seconds. When there is no activity for 10 seconds, the system will exit from registration status automatically. To register a new user card, the user shall swipe the admin card again.

## 4.SIP Settings

Click the icon "VOIP" on the left side to enter into the following interface:

Streaming Media Solutions

SIP Settings

SIP enable: ☐

Proxy:

Realm:

Outbound:

SIP URI:

SIP Port:

R SIP:

User:

Password:

Timeout:

Ringing:

**SIP enable:** when SIP account No. is enabled, the SIP server of a third party is generally used.

**Proxy:** URL of SIP proxy server in format: sip:ip or sip:domain name.

**Realm:** realm of the device, usually the same as IP or domain name.

**User name:** refers to the name of the SIP proxy server, provided by the SIP proxy server administrator.

**Password:** the password to access the SIP proxy server, provided by the SIP proxy server administrator.

STUN IP and Port refer to the IP and port of public server for NAT traversal of audio and video.

**Timeout:** 120 seconds, 300 seconds, 600 seconds, 1200 seconds or 1800 seconds.

**Ringin:** ringing time of indoor monitor which is called by outdoor panel can be set. The time can be set at 35 seconds, 45 seconds, 60 seconds, 90 seconds or 120 seconds.

Once this is set up, click the key "Submit" to enable new settings.

## 5.Call Forwarding

Click the icon "Forward" on the left side of the page to enter the interface as shown below:

RoomNo	Account	RoomNo	Account	RoomNo	Account

The room number can be bound with the telephone number. When a visitor calls but there is no answer within 25 seconds, the system will automatically forward the call to the phone. Specific steps are as follows:

1. Enter the room number first, then enter the phone number you want to bind;
2. To delete this account, check the box;
3. Once this is set up, click the key "Submit" to enable new settings.

(**Note:** This item requires support of extension module or local SIP service provider.)

## 6.Advanced Settings

Click the icon "Advanced" on the left side of the page to enter the interface as shown below:



**Quick Call:** Check the box to enable this function. It refers to the call to management center. Enter the SIP address of specified management center device in the box after URL. The device can be indoor monitor or SIP phone of other manufacturers.

Check the box of Voice GW to enable voice gateway. The settings are as follows:

1. Connect LAN port of voice module to the computer through the switch, set the computer's IP address to 192.168.2.\*, open IE browser, and enter http://192.168.2.1 and default password "admin" to the setting interface;

2. According to the internet situation, assign appropriate IP address to WAN port of voice module (IP of WAN port cannot be on the same network segment as the one of LAN port. If WAN port is set to 192.168.2.\*, the gateway of LAN port will be adjusted automatically rather than 192.168.2.1). Enable the access permission of WAN port and click "Apply".

3. FXO port settings: set SIP user ID for the port, set DTMF mode to RFC2833 and click "Apply".

4. IP address of WAN port for voice gateway is the one of setting URL for system extension module of outdoor panel. The final port No. is default port of the system. The format of URL bar is: [SIP user ID of FXS port] @ [IP of WAN Port]: 5062.

**ONU Pass:** check the box to enable ONU settings;

Face: check the box to enable face recognition function. Three similarity levels for selection: low, normal or high.

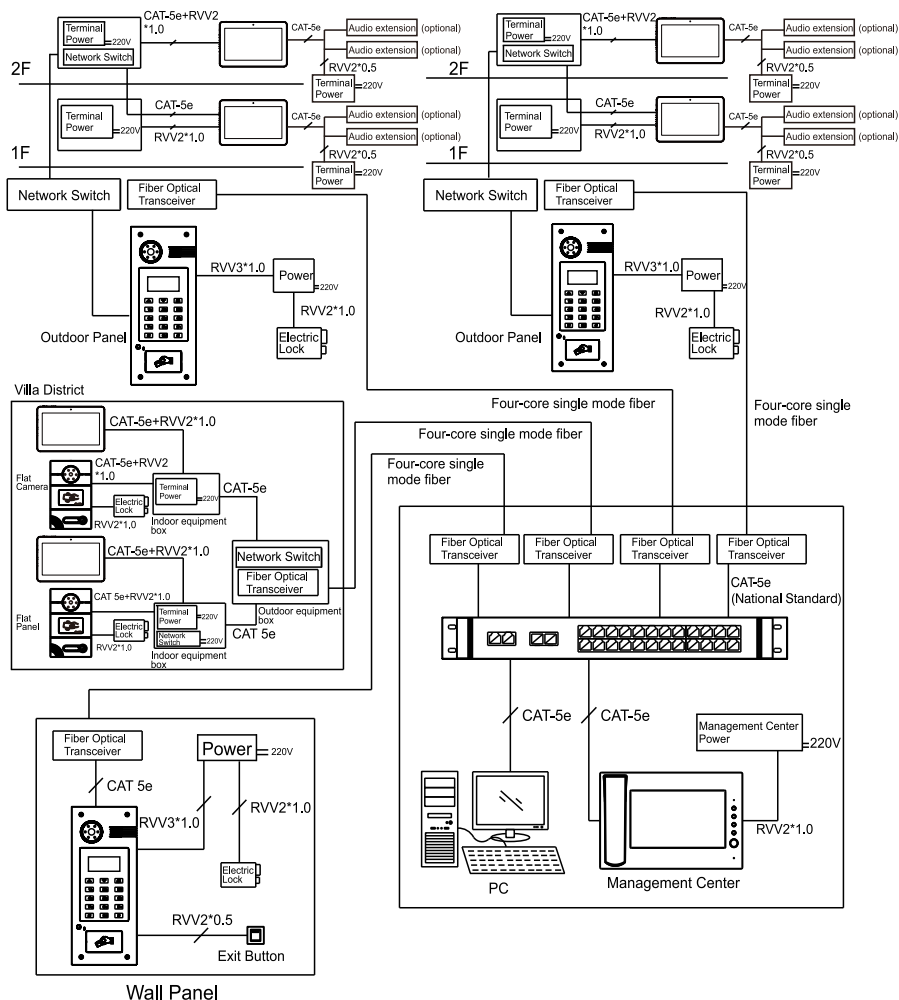
Once this is set up, click "Submit" to enable new settings.

## 7. Logout

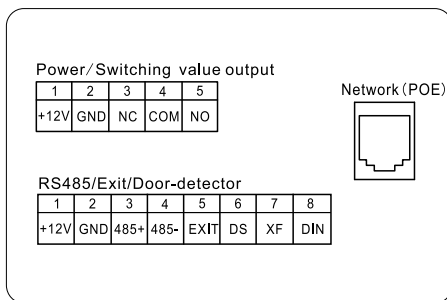
Click the icon "Logout" on the left side. In next page, click the icon "Submit" to log out the system.



# System connection diagram



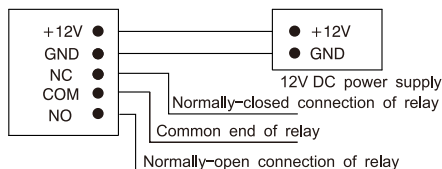
# Wiring diagram of outdoor panel



## 1. Power/Switching Value Output

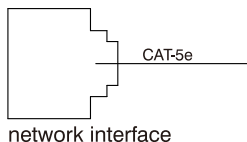
Power interface connectst with 12V power supply;

Switching value output connects with electric lock. Relay terminal can withstand the lock current of max.3.5A. Independent power supply is required for the lock.



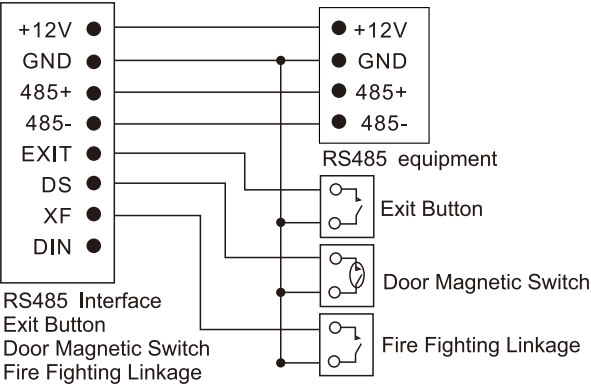
## 2. Network Interface

Connect to PC, management center, indoor monitor or other network device through network switch.



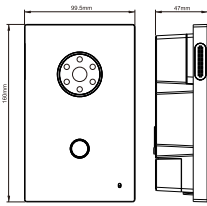
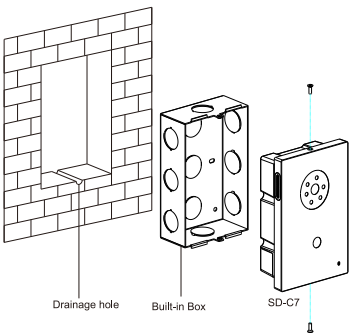
3. RS485 Interface/Exit Button/Door Magnetic Switch/Fire Fighting Linkage

Rs485 interface can connect to the equipment with RS485 interface; DIN is reserved terminal, please don't connect it.

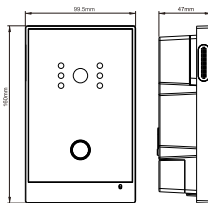
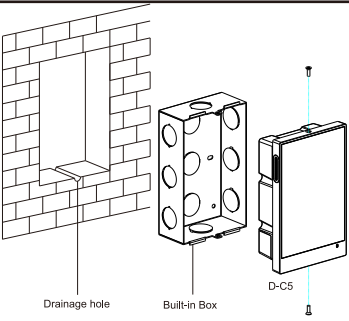


# Installation instructions

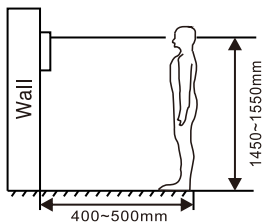
## Model: SD-C7

Appearance dimension	Installation diagram
 <p>Product size: 160x99.5x47mm Built-in box size: 151x94x60mm Trepanning size: 155x97x65mm</p>	 <p>Drainage hole      Built-in Box      SD-C7</p>

## Model: SD-C5

Appearance dimension	Installation diagram
 <p>Product size: 160x99.5x47mm Built-in box size: 151x94x60mm Trepanning size: 155x97x65mm</p>	 <p>Drainage hole      Built-in Box      D-C5</p>

## Installation notes:



[Suggestion]: During the installation, the display screen should be 1450~1550mm from the ground.

## Troubleshooting

Some common failures and troubleshooting methods are listed for your reference. In case of failure which cannot be repaired, do not disassemble or repair the product by yourself. Please contact the after-sales service department.

When outdoor panel fails to call indoor monitor:

- a. When setting villa outdoor panel, please make sure building No. and unit No. of outdoor panel are the same as the ones of indoor monitor;
- b. Please check whether the network is connected;
- c. Please check if there are any security settings for the network, such as VLAN configuration;
- d. Indoor monitor cannot be set as sub device only. Main device is required.

# Safety & Precautions

## Safety & Precautions

To protect you and others from harm or protect your device from damage, please read the following information before using your device.

Do not install equipment in the following areas:

- Do not install equipment in high temperature, humidity, near the magnetic field, such as generators, transformers or magnets, etc.
- Do not place the equipment near the heating items such as the electric heater or the liquid container.
- Do not place the device directly in the sun or near the heat source, which may cause the body to be discolored or deformed.
- Do not install the equipment in an unstable position to avoid the property losses or personal injury caused by the falling of device.

### **Prevent electric shock, fire and explosion**

- Do not use damaged power cord, plug or loose power outlet.
- Do not touch the power cord with wet hands or unplug the power source by pulling the power supply.
- Do not bend or damage the power cord.
- Do not touch the equipment with wet hands.
- Do not let the power slide, or cause a collision.
- Do not use power supply without manufacturer approval.
- Do not splash water or other liquids into the equipment.

### **Clean surface**

- Use a soft cloth dipped in a small amount of water to clean the surface of the machine and dry it with a dry cloth.

### **Other matters needing attention**

- In order to prevent damage to the paint or housing, do not expose the device to chemical products, such as thinner, gasoline, alcohol, insect repellent, sunscreen, or pesticides, etc.
- Do not beat or hit the device with a hard object.
- Do not disassemble, refit or modify the device at your own discretion. The arbitrary modification is not covered under warranty. When any repair required, please contact the customer service center.
- When the device emits abnormal sound, smell or smoke, unplug the power immediately and contact the customer service center in time.
- If you do not use the device for a long time, it is recommended to unplug the power adapter, take out memory card and put the device in a dry environment.

